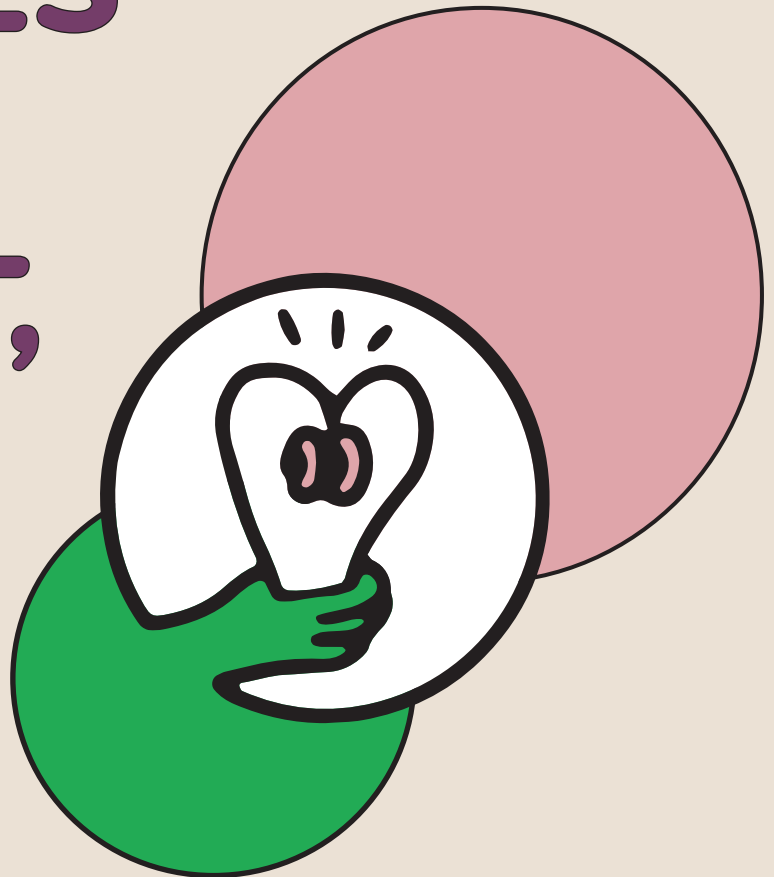


# ACTIVITIES THAT SUPPORT, OR NOT, LIFE



Think about the fundamental activities  
for **sustaining life**

Think of the most **life-destroying** activities  
in the world

Reflect on who is usually doing these activities  
in our society.

How is it related to gender?

Why is it important to value more those  
characteristics and activities connected  
with the feminine?

(Check in our conceptual framework “Gender Stereotypes”)