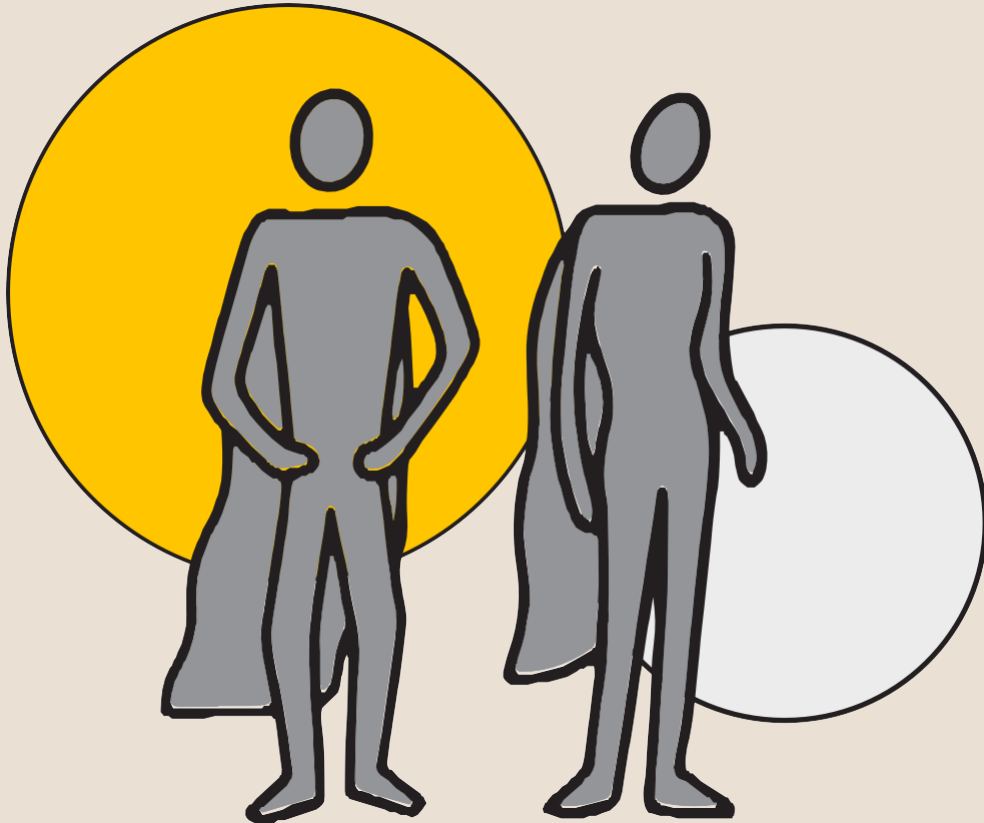
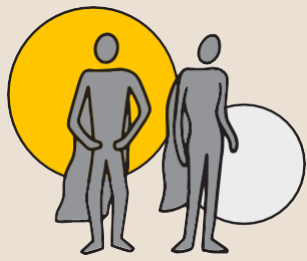


PRIVILEGE AND RANK



Think about a group/organization in which you participate, how do you feel in that environment, what privileges do you have, how do those privileges condition how you feel in the group?

(Source: ALTEKIO, based on Arnold Mindell and Beatrice Briggs)

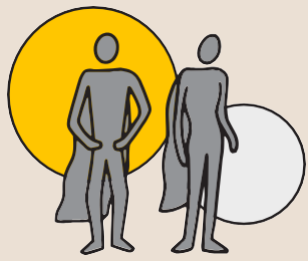


PRIVILEGE AND RANK

Test

SOCIAL RANK

STRUCTURAL RANK	Rate from 1 to 5 (1=low, 5=high)	Comments
Ethnic characteristics		
Gender		
Sexual preferences		
Age		
Social class		
Profession		
Wealth/money		
Education (formal studies, degrees...)		
Health (physical, mental, emotional)		
Abilities: physical, intellectual, emotional		
Network of social contacts		
Appearance/appropriateness to prevailing models of beauty		
Legal privileges		
Languages		
CONTEXTUAL/GROUP RANK	Rate from 1 to 5 (1=low, 5=high)	Comments
Position in formal hierarchy (if any)		
Time in the group (founder, new)		
Personal relationship you have with the people you care about in the group		
Knowledge and experience in the field		
Access to key people or decision makers		
Knowledge of the languages and codes of the group itself		



PRIVILEGE AND RANK

Test

PERSONAL RANK

PSYCHOLOGICAL RANK	Rate from 1 to 5 (1=low, 5=high)	Comments
Intelligence		
Self-confidence		
Self-esteem		
Ability to overcome adversity		
Ability to communicate - social skills		
Self-awareness		
Emotional development		
Ability to "influence" others		
Initiative		
Creativity		
"BEING IN THE WORLD" RANK	Rate from 1 to 5 (1=low, 5=high)	Comments
Accordance of what you do in your life with your values		
Clarity of your personal vision and goals		
Connection with your values, beliefs...		
Connection with something bigger than you (God, religion, spirituality, etc.)		